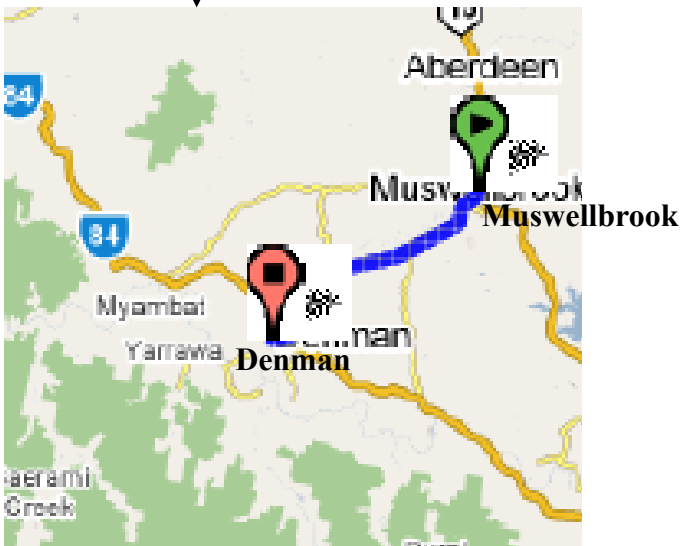
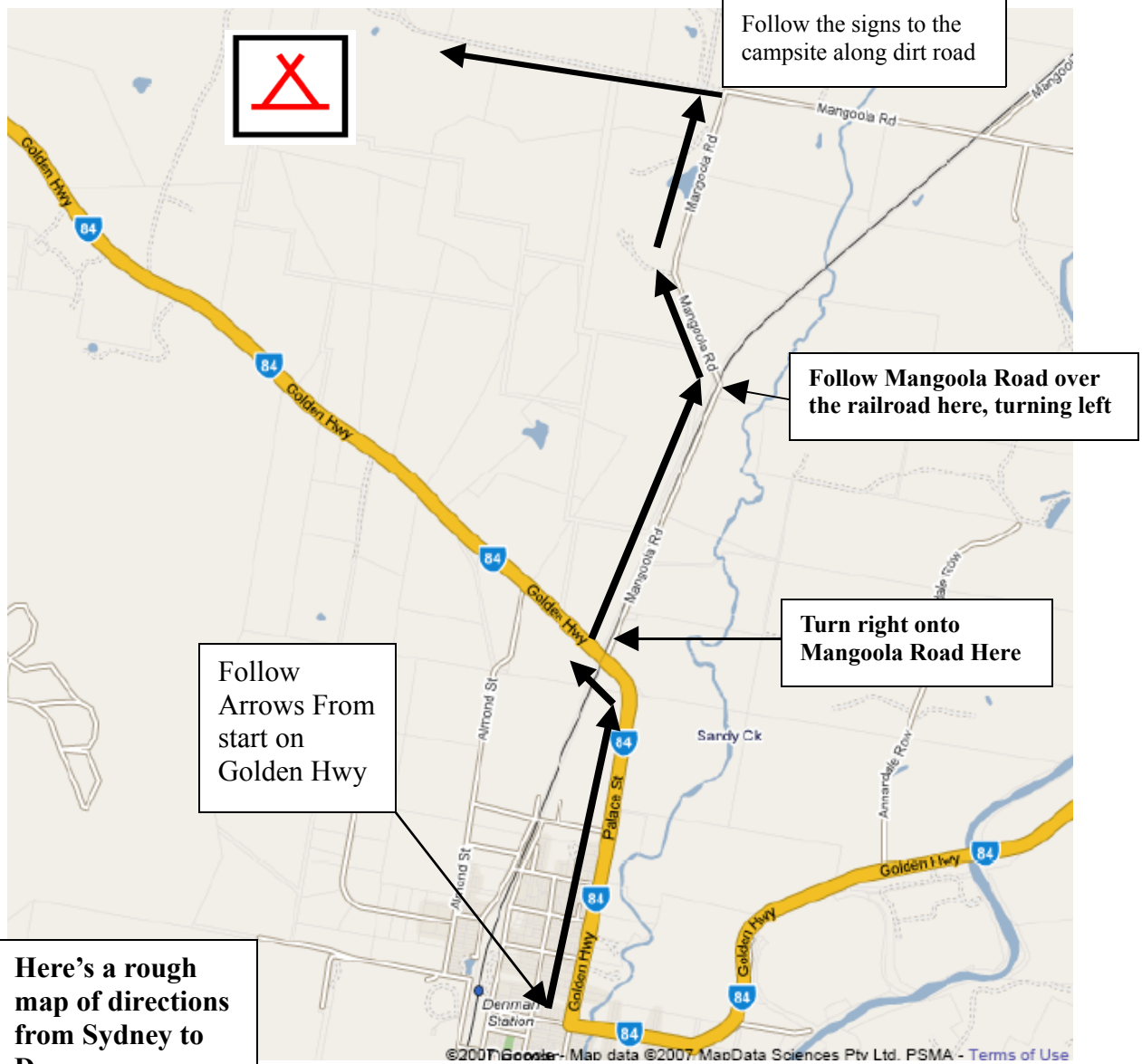


# HOW TO GET TO ANVIL HILL FROM MUSWELLBROOK

Signposts will direct you to campsite and location of human sign



1. Head south on New England Hwy toward William St 0.6 km
2. Continue on Sydney St 1.8 km
3. Continue on Denman Rd 19.4 km
4. Slight right at Golden Hwy 2.8 km
5. Continue on Jerdan St 59 m
6. Slight left at Golden Hwy 0.6 km